

High-current vertical break disconnecter for indoor use

TYPE SB250

Ur : 24 / 25,8 kV - BIL 125 / 150 kV - Ir ≤ 10000 A

Ik : 100 kA - Ip : 320 kA



Applications

- For power plant.

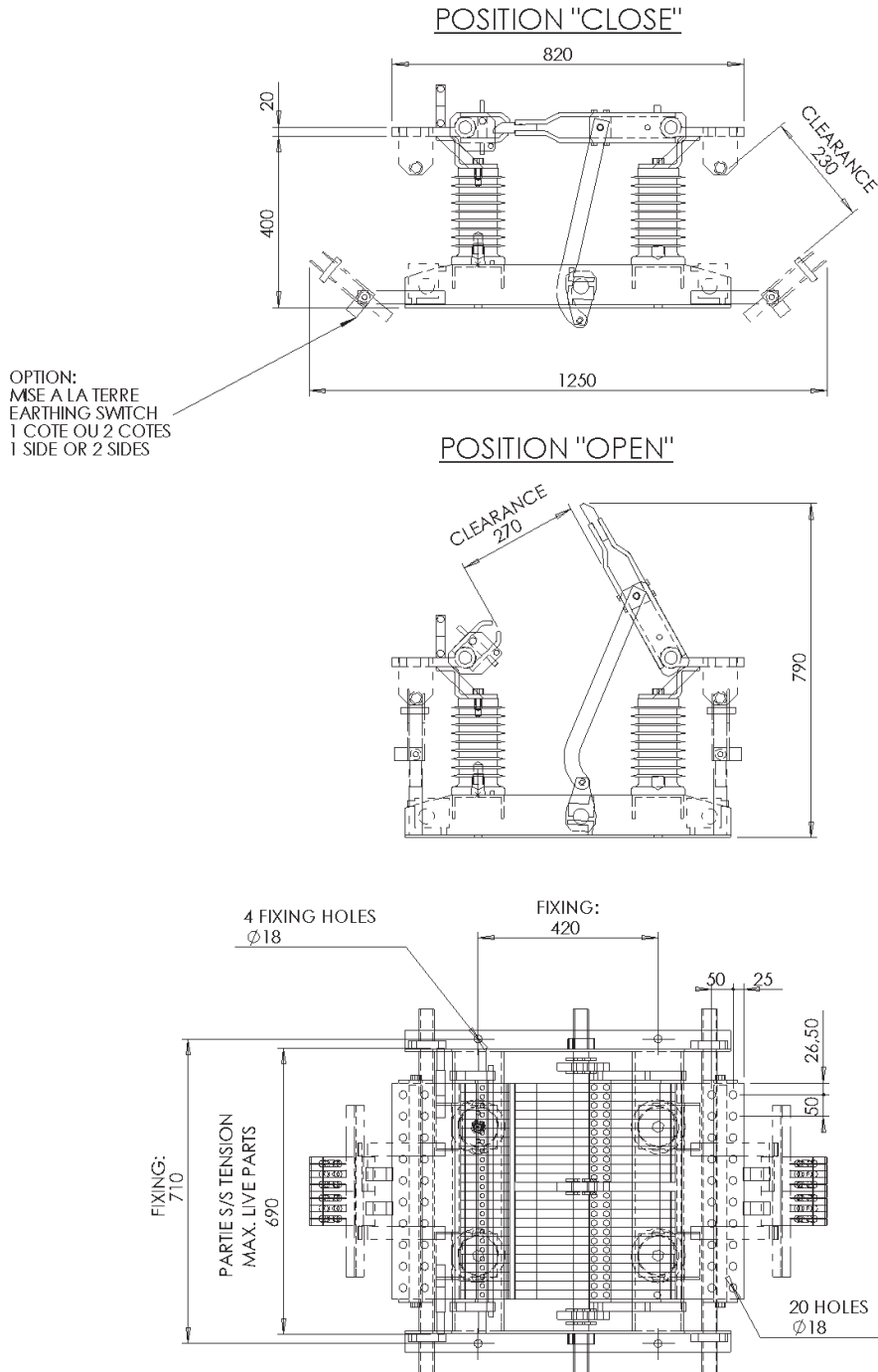
Technical datas

- Dielectric withstand at 50/60 Hz for 1 minute (kV rms)
 - to earth
24 kV : 50 kV - 25,8 kV : 70 kV
 - accross isolating distance
24 kV : 60 kV - 25,8 kV : 77 kV
- Dielectric withstand rated lightning impulse withstand (1,2 / 50 μs)
 - to earth
24 kV : 125 kV - 25,8 kV : 150 kV
 - accross isolating distance
24 kV : 145 kV - 25,8 kV : 165 kV
- Epoxy resin insulator
 - minimum creepage distance
24 kV : 390 mm - 25,8 kV : 420 mm (higher values upon request)
- Primary Terminals
silver plated copper pads
- Seismic withstand
0,2 g (higher values upon request)
- Mechanical endurance
10 000 cycles
- Small current breaking capacity
0,5 A (for higher values see options hereafter)
- Weight per pole
225 kg

Options

- Quick making device for generator braking (SB250 FB)
 - I : 7000 A under U : 3 kV
- Earthing switch associated with disconnecter
 - rated short-circuit withstand current
Ik : 90 kA - Ip : 225 kA
- Interlocking device with other functions
- Main disconnecter drives
 - electrical (EOM), one pole or gang operated
- Earthing switch drives
 - manual (MOM) or electrical (EOM), one pole or gang operated

Outline drawing (24kV - 10000A with double earthing-switch)



The drawing above is given for information only. Detailed layout available upon request.

General features

- Applicable IEC standards compliant
- Type tests reports available upon request