

## Outdoor rocking disconnecter

### TYPE SBR

Ur : 3 / 25 kV - BIL 95 to 250 kV - Ir ≤ 2500 A

Ik : 40 kA - Ip ≤ 100 kA



### Applications

- For high speed railway catenaries, for outdoor use
- Single or double pole installation, horizontally or vertically

### Benefits

- Compact design.
- Easy installation on site and easy setting.
- Easy maintenance due to high pressure silver-plated coating self-cleaning contacts.
- High reliability : mechanical endurance up to 10000 cycles.

### Technical datas

Rated voltage (kV)		Ur	3	25	
BIL (kV)			95	200	250
Dielectric withstand at 50/60 Hz for 1 minute (kV rms)	<i>to earth</i>		38	95	95
	<i>accross isolating distance</i>		45	105	110
Dielectric withstand rated lightning impulse withstand (1,2 / 50 μs)	<i>to earth</i>		95	200	250
	<i>accross isolating distance</i>		110	220	290
Rated current (A)		Ir max	2500	1250/2500	1250/2500
Porcelain insulator (silicone optional) • minimum creepage distance		mm	440	900	1300
Optional : Earthing switch (Ik same as disconnecter)			√	√	√

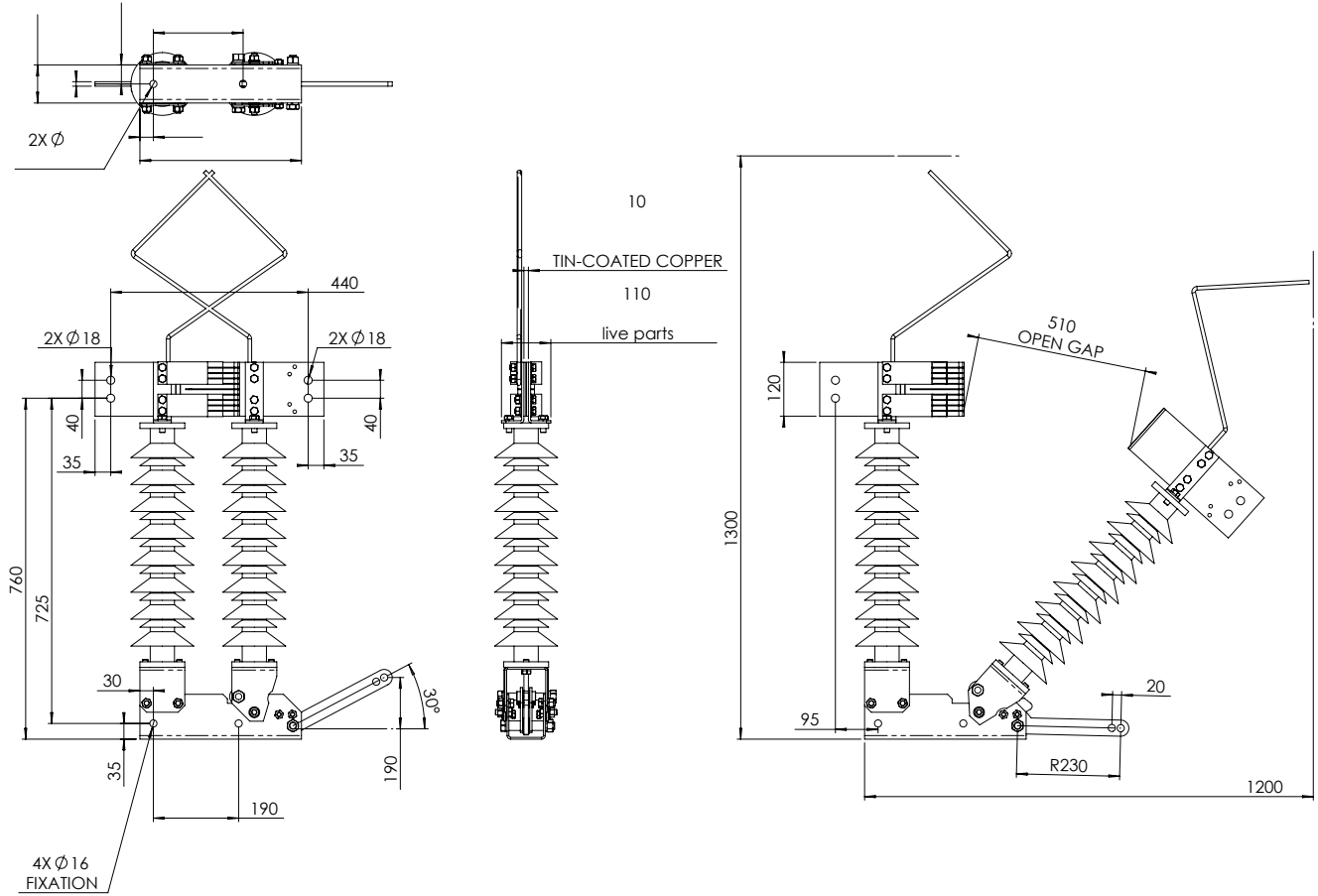
- Primary terminals
- Seismic withstand
- Mechanical endurance
- Small current breaking capacity
- Weight per pole

Tinned copper pads  
 0,2 g (higher values upon request)  
 2 000 or 10 000 cycles  
 cable I4a : 6 A - transformer I3 : 9 A  
 30 kg

### Options

- Interlocking device with other functions
- Available in grease free version
- Main disconnecter drives
  - manual (MOM) or electrical (EOM)
- Earthing switch drives
  - manual (MOM) or electrical (EOM)

## Outline drawing



*The drawing above is given for information only. Detailed layout available upon request.*

## General features

- Applicable IEC standards compliant.
- Type tests reports available upon request.