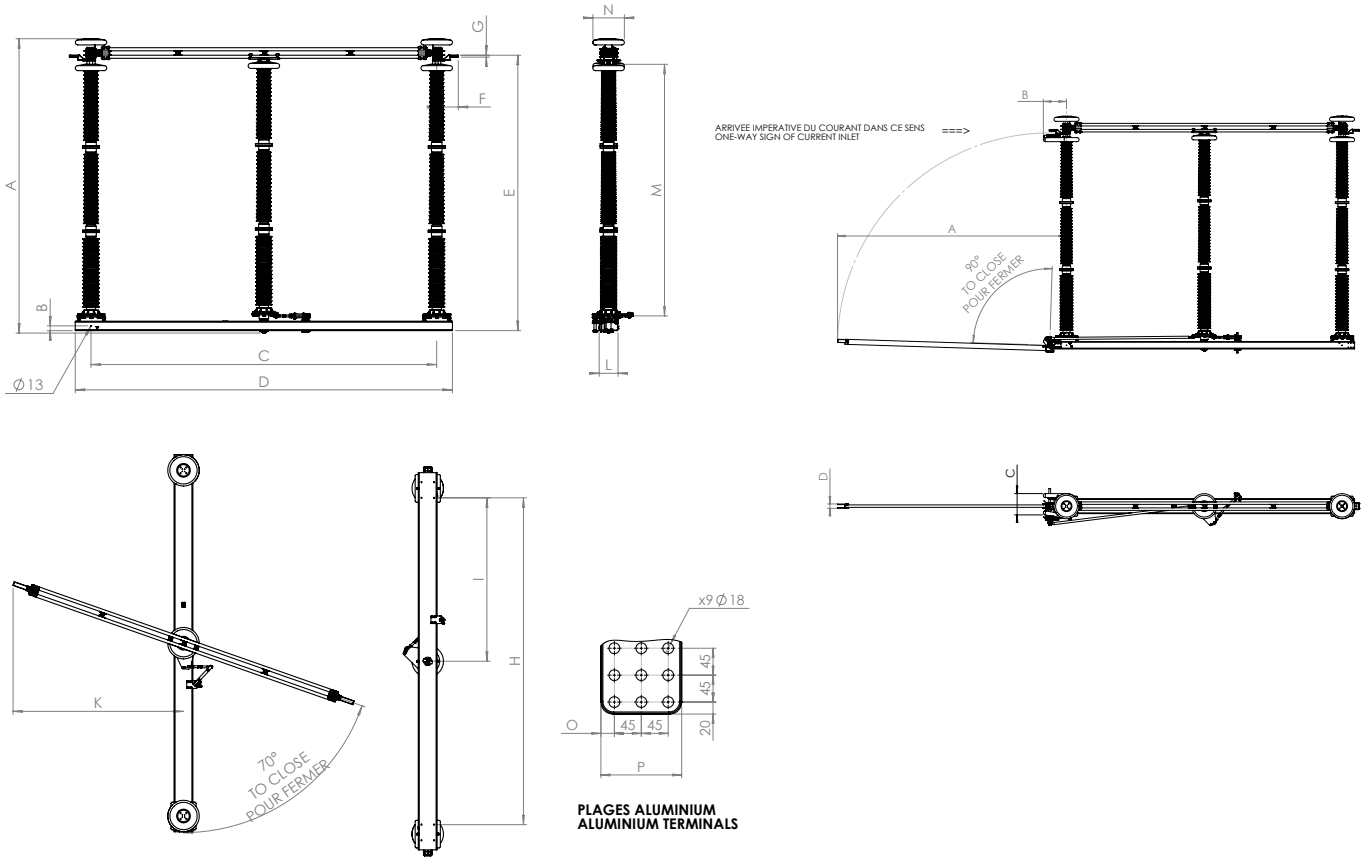


Outline drawing



The drawing above is given for information only. Detailed layout available upon request.

Rated voltage Ur	Rated current Ir	Rated short time current Ik	BIL (kV)	A	B	C	D	E	F	G	H	I	K	L	M
				mm	mm	mm	mm	mm	mm	mm	mm	mm	mm	mm	mm
52 kV	≤ 4000 A	≤ 63 kA	250	965	40	850	1150	780	345	30	500	250	530	120	560
72,5 kV	≤ 4000 A	≤ 63 kA	325	1175	40	1050	1350	990	345	30	750	375	610	120	770
100 kV	≤ 4000 A	≤ 63 kA	450	1425	40	1300	1600	1240	345	30	750	375	745	120	1020
123 kV	≤ 4000 A	≤ 63 kA	550	1590	60	1800	2120	1390	345	30	900	450	1070	250	1200
145 kV	≤ 4000 A	≤ 63 kA	650	1890	60	1800	2120	1690	345	30	900	450	1070	250	1500
170 kV	≤ 4000 A	≤ 63 kA	750	2100	60	2000	2320	1900	345	30	1100	550	1070	250	1700
245 kV	≤ 4000 A	≤ 63 kA	1050	2700	60	2800	3120	2500	345	30	1900	950	1460	250	2300
300 kV	≤ 4000 A	≤ 63 kA	1050	3160	60	3500	3820	2850	250	30	2600	1300		250	2650
362 kV	≤ 4000 A	≤ 63 kA	1175	3410	60	4100	4420	3100	250	30	3200	1600		250	2900
420 kV	≤ 4000 A	≤ 63 kA	1425	4035	75	4700	5200	3730	345	30	4400	2200	2335	300	3350
550 kV	≤ 4000 A	≤ 63 kA	1550	4685	75	5500	6000	4380	345	30	5200	2600	2710	300	4000

Here above are mentioned maximum dimensions. For higher performances, please consult us.

General features

- IEC standards compliant
- Type tests reports available upon request