

Earthing switch disconnecter type STE



Ur : 123 to 550kV

Ik ≤ 63kA - tk ≤ 3s - Ip ≤ 163kA



This latest generation of earthing switch succeeds to the previous version ST18504 and extends to 550kV. Offering a flexibility on site, it can be installed either alone or as associated single or double earthing switch.

More reliable and cost-effective, the earthing switch type STE of SDCEM provides an improved resistance to electromechanical efforts by its axial operation.

Rich of its experience and strong capacity of innovation, SDCEM offers a wide range of disconnectors and switches medium, high and very high voltage, covering all customer needs through effective and adapted solutions.

PERFORMANCE

- Design and tests compliant to IEC standards (type test reports available upon request)
- Seismic withstand : 0,2g*
- Ice operation : 10mm*
- Mechanical endurance : 2000 cycles*

SECURITY

- Compliant to ISO 9001 and ISO 14001 certifications
- Improved resistance to efforts by axial earthing switch arm
- A stabilization device allows a safer use

FLEXIBILITY

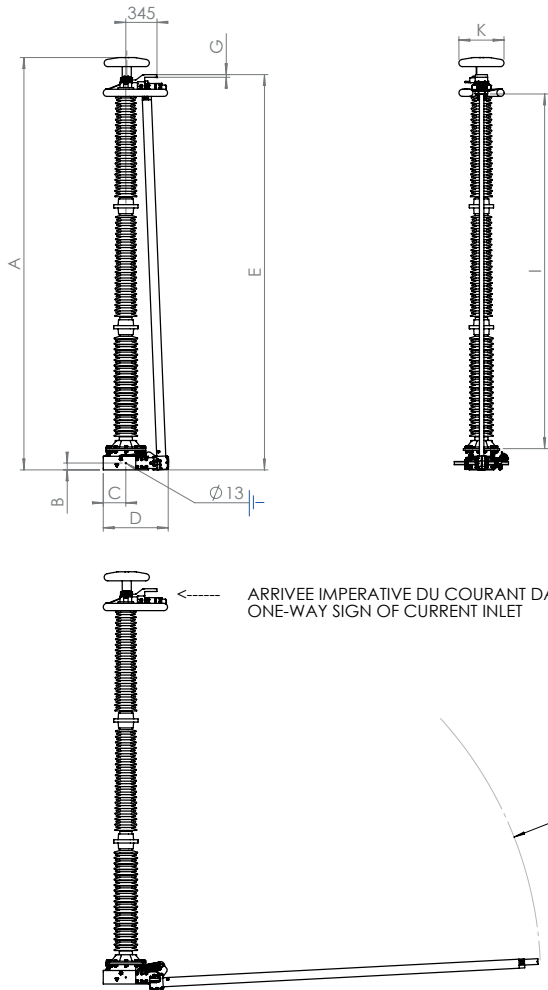
- Brown porcelain insulator ; class 3* or class 4
- Primary terminals : horizontal aluminium pads* or cylindrical horizontal copper terminals
- Adapted to installation needs : earthing switch alone, or associated single earthing switch or double earthing switch
- Available with manual or electrical operating mechanisms, ganged operated or one-pole operated.

SERVICES

- After Sales Service
- Design for special adaptations
- Layout studies
- Installation supervision
- Adjustment on site
- Retrofit

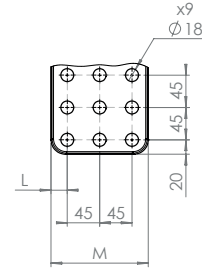
* Standard values. For further inquiries, please consult us.

Earthing switch disconnecter type STE

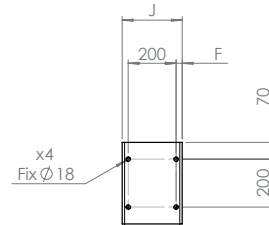


PLAGE DE RACCORDEMENT : TERMINAL PAD :	G	L	M
31,5 / 40kA	20	15	120
50 / 63kA	30	20	130

PLAGE ALUMINIUM
ALUMINIUM TERMINAL PADS



CHASSIS ACIER
FRAME STEEL



Drawing above represents highest voltage for this device.

Rated voltage Ur	Short-circuit current (Ik - tk:3s)	BIL (kV)	SIL (kV)	A	B	C	D	E	F	H	I	J	K	Weight (kg)
				mm	mm	mm	mm	mm	mm	mm	mm	mm	mm	
123kV	≤ 63kA	550	NA	1410	50	180	490	1410	25	1285	1220	250	300	81
145kV		650	NA	1690	50	180	490	1690	25	1575	1500	250	300	100
170kV		750	NA	1900	50	180	490	1900	25	1780	1700	250	300	149
245kV		1050	NA	2500	50	180	490	2500	25	2375	2300	250	300	209
300kV		1050	850	3095	50	180	490	2905	25	2790	2650	250	300	242
362kV		1175	950	3345	50	180	490	3155	25	3040	2900	250	500	275
420kV		1425	1050	3920	75	250	720	3730	50	3585	3350	300	500	374
550kV		1550	1175	4570	75	250	720	4380	50	4235	4000	300	500	412

Are mentioned above dimensions and maximum values.

Available options

- Short-circuit current : 3 seconds optional up to 245kV (standard values : 1 second from 123 to 245kV and 3 seconds beyond 300kV)
- Cylindrical horizontal copper terminals
- Terminal connection on bimetal plate upon request.
- Making and breaking capacity for inductive currents (IEC 62271-102 Annex C, Class A).

NB : For more information or futher inquiries, please consult us.