

## Heavy current disconnecter for power plant

### TYPE SC300

Ur : 24 / 25,8 kV - BIL 125 / 150 kV - Ir ≤ 3150 A

Ik : 160 kA - Ip : 511 kA



### Applications

- For power plant

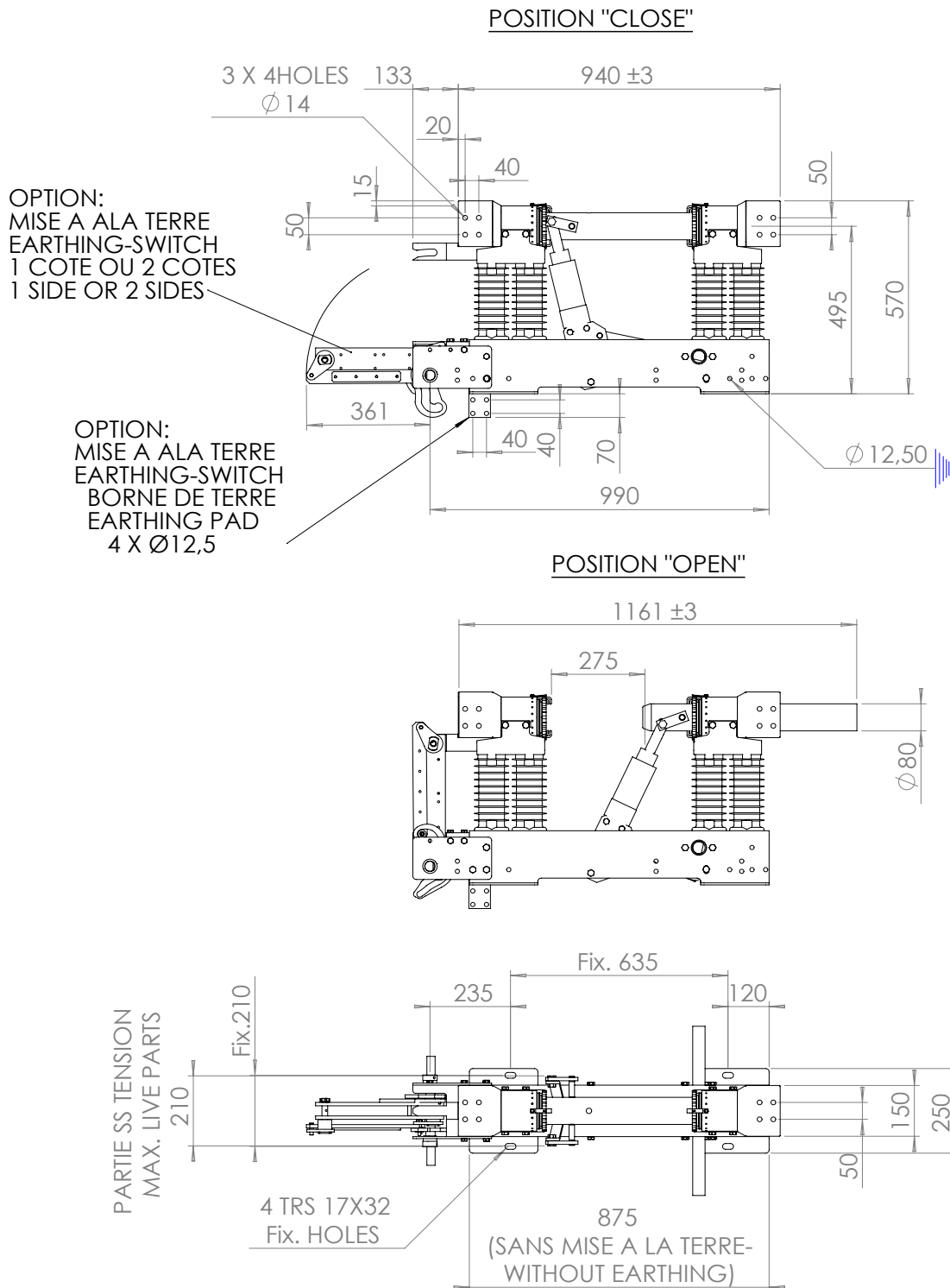
### Technical datas

- Dielectric withstand at 50/60 Hz for 1 minute (kV rms)
  - to earth  
24 kV : 50 kV - 25,8 kV : 70 kV
  - accross isolating distance  
24 kV : 60 kV - 25,8 kV : 77 kV
- Dielectric withstand rated lightning impulse withstand (1,2/50 μs)
  - to earth  
24 kV : 125 kV - 25,8 kV : 150 kV
  - accross isolating distance  
24 kV : 145 kV - 25,8 kV : 165 kV
- Epoxy resin insulator
  - minimum creepage distance  
24 kV : 275 mm - 25,8 kV : 290 mm (higher values upon request)
- Breaking and making capacity of small current  
No (0 A)
- Primary Terminals  
silver plated aluminum pads
- Seismic withstand  
0,2 g (higher values upon request)
- Mechanical endurance  
10 000 cycles
- Weight per pole  
150 kg

### Options

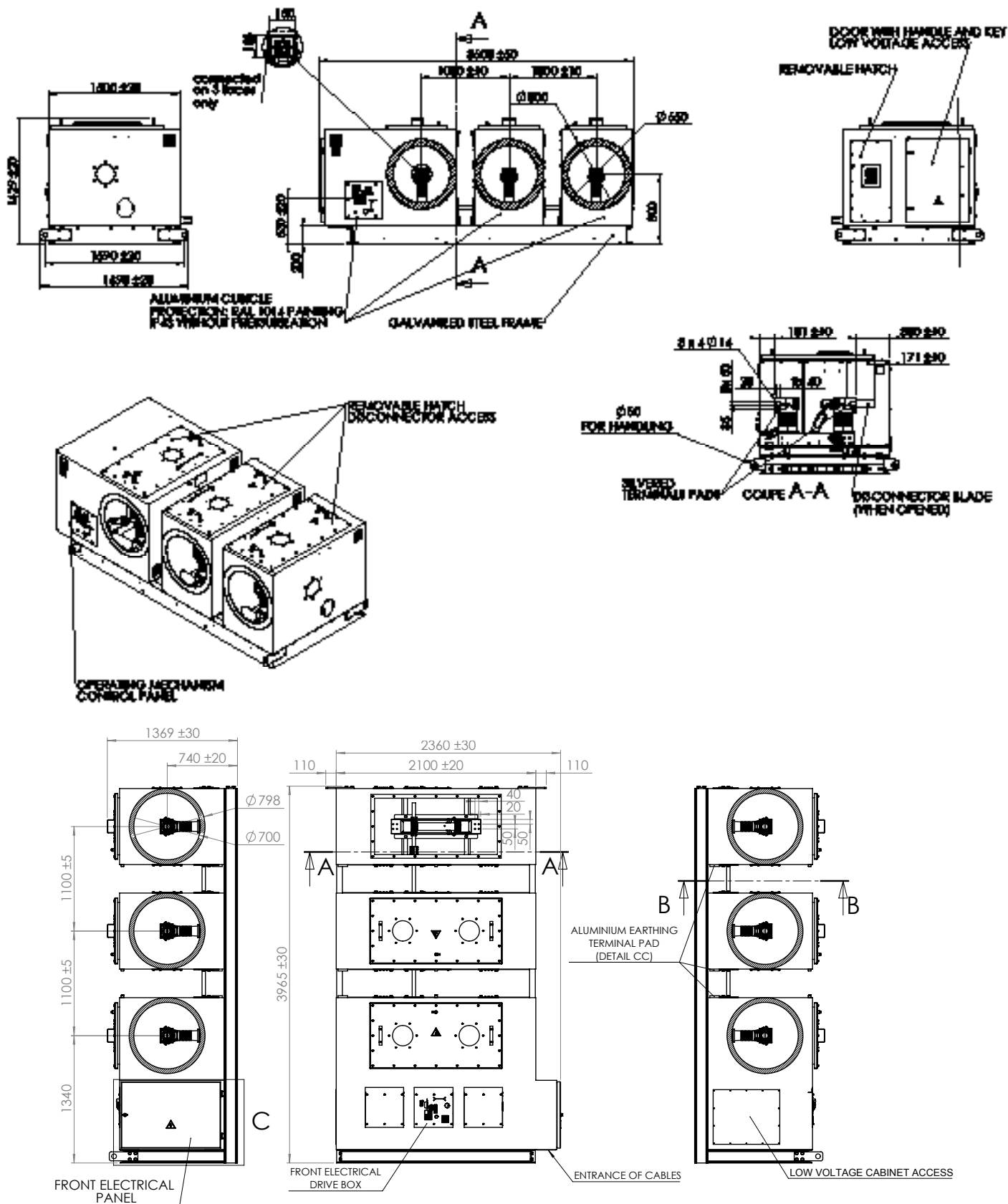
- Quick breaking device with breaking capacity of small capacitive current : 10 A
- Earthing switch associated with disconnecter
  - Rated short- circuit withstand current : Ik : 160 kA - Ip : 463 kA (STAS 90)
- Interlocking device with other functions
- Main disconnecter and earthing switch drives
  - manual (MOM) or electrical (EOM), one pole or gang operated

**Outline drawing (rated voltage: 24 kV)**



*The drawing above is given as an indication. Detailed drawing available on request.*

### Erection drawing



Sample layout. For more information, please consult us.

### General features

- IEC standards compliant
- Type tests reports available upon request